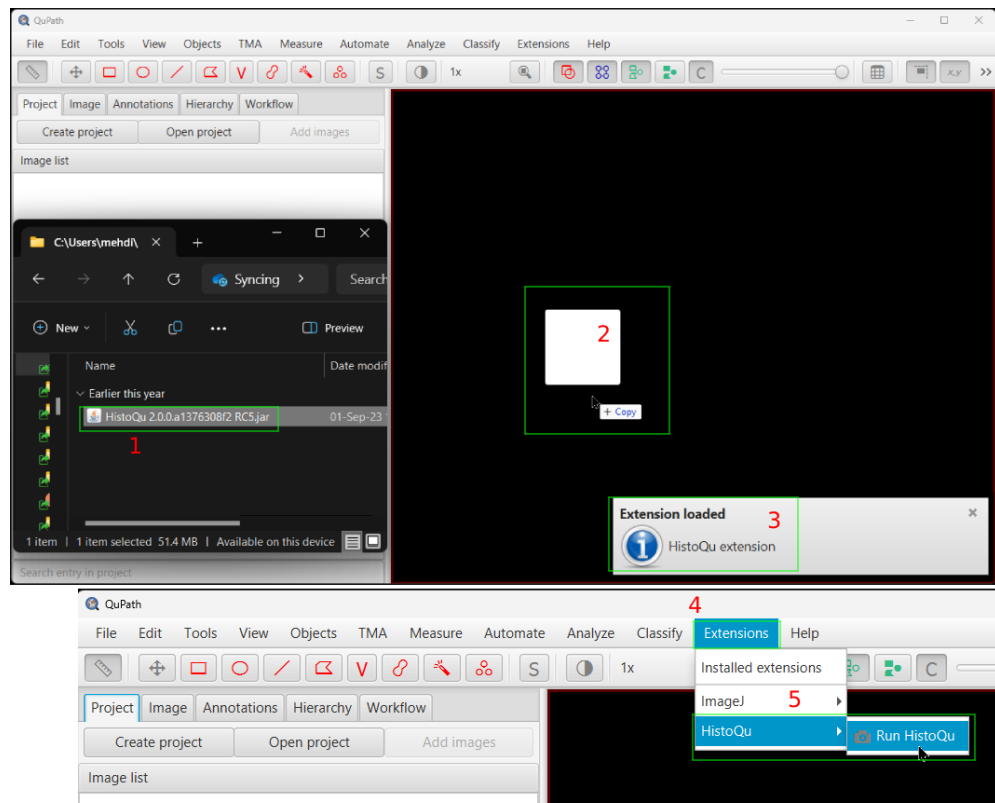


# How to install the Pathomation QuPath plugin

QuPath plugin installation (Figure 1: how to install the plugin):

1. Extract the "HistoQu 2.0.0.a1376308f2 RC5.zip" file. You can get the plugin [here](#).
2. Open QuPath v0.3.2. The newer version, QuPath v0.4.3, is not supported yet. You can get the supported QuPath v0.3.2 [here](#).  
Drag the "HistoQu 2.0.0.a1376308f2 RC5.jar" file you extracted in step 1 to QuPath v0.3.2.
3. Once you release the file in QuPath v0.3.2, the extension will be installed.
4. In QuPath v0.3.2, you can open the plugin by clicking on the "Extensions" tab.
5. Expand the "HistoQu" menu to finally open the plugin by clicking on the "Run HistoQu" button.

Figure 1: how to install the plugin



Qupath plugin Startup guide (Figure 2: how to start):

6. Run PMA.start. You can get the latest version of PMA.start [here](#).  
Open the plugin in QuPath v0.3.2, and click on the "PMA.start" button.
7. Browse the image you want to use in QuPath.
8. In the "Choose scale" section, you can choose the "Scale" of the image. Note that the larger you choose the scale, the longer the QuPath application might take to render the image.
9. Confirm your choice by clicking the "OK" button.

Figure 2: how to start

