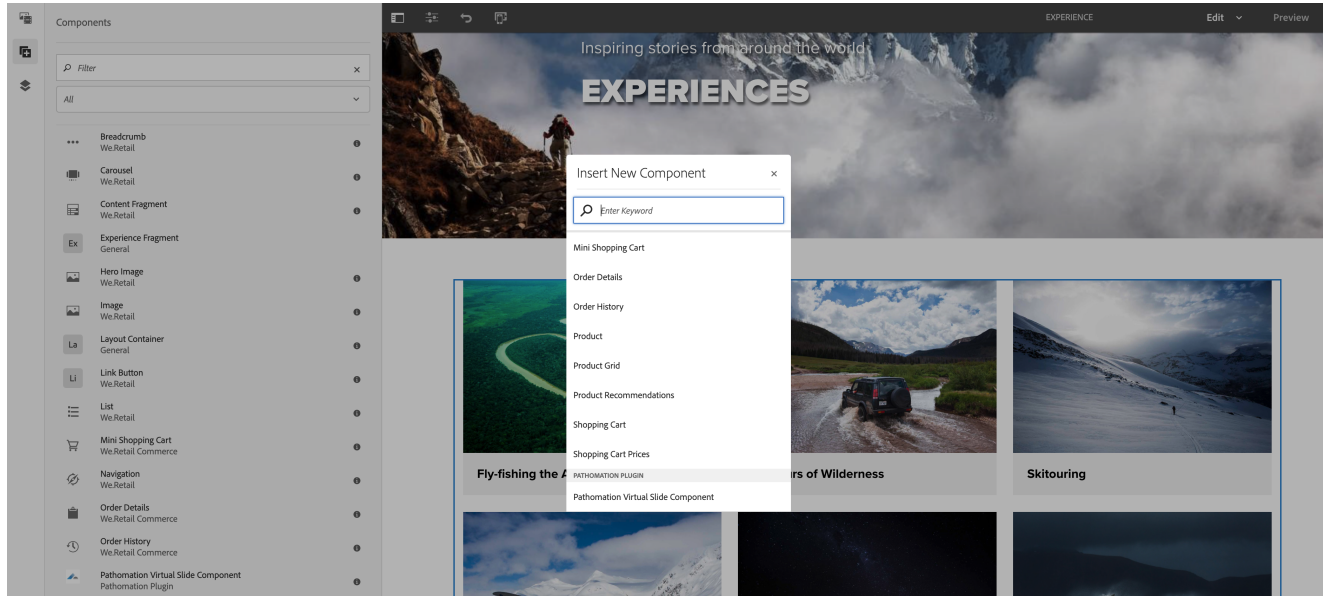


User Manual

Using the component

The two different ways of selecting this component are:

1. The components bar on the left side of the Touch UI (bottom left of this image, greyed-out due to the popup in the middle of the page)
2. Using the '+' button on the layout container in your site (which brings you this popup in the middle of the page)



Dialog

This is used to select the specific directory / folder name, followed by the image name.

The image name must be followed by an extension e.g. ".jpg", ".mrxs", or any other you may find in this list: <https://www.pathomation.com/formats/>.

Example for the demonstration account: Reference/3DHitech/CMU-1.mrxs (change the '1' in a 2 or 3 to see other images)

Pathomation Virtual Slide Component Conf...

Find the desired image by visiting <https://my.pathomation.com/> and copy the image path below.

Image Path

/pathomation-slides/Reference/3DHitech/CMU-3.mrxs

You can type the image path into this field, or click the file explorer button to the right of it (see image above here)

That will lead you to the tree-based file selection system you see on the image below here. Don't forget to hit the "Confirm" button on the top right.

It might take a few seconds to load this screen, depending on your internet connection.

✕Select path✓

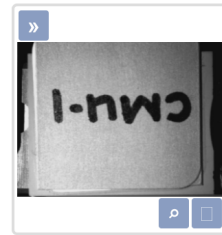
pathomation-slides / d0044_slidebox2 / case 1B / case2_ERvB0n2WkAMrUbH.jpg Confirm

analysis	case 1A >	case2_ERvB0n2WkAMrUbH.jpg
cases	case 1B >	case2_ERvBp9GXkAEZ8lW.jpg
d0030	case 2C	
d0044_slidebox1 >	case 2D	
d0044_slidebox2 >		
DEMO >		
jnj >		
mitosis_wsi >		
my_slides >		
P0012 >		
P0017_escop >		
P0017_escop_hdd		
P0022_slidebox_cases >		
P0036_bwp >		

After clicking "Confirm" your component will load with the image you have selected:



Reference/3DHitech/CMU-1.mrxs «



0° [Slider] [Refresh] [Code] [Reset] [Close]

10 mm ✕

