

PMA.transfer 2.0

by Yassine Iddaoui



PMA.transfer 2.0

Copyright 2020, Pathomation

All rights reserved. No parts of this work may be reproduced in any form on by any means - graphic, electronic, or mechanical, including photocopying, recording, taping, or information storage and retrieval systems - without the written permission of the publisher.

Products that are referred to in this document may be either trademarks and/or registered trademarks of the respective owners. The publisher and the author make no claim to these trademarks.

While every precaution has been taken in the preparation of this document, the publisher and the author assume no responsibility of errors or omissions, or for damages resulting from the use of information contained in this document or from the use of programs and source code that may accompany it. In no event shall the publisher and the author be liable for any loss of profit or any other commercial damage caused or alleged to have been caused directly or indirectly by this document

Printed: January 2020

Table of Contents

Part I About PMA.Transfer	5
1 Who should read this	5
2 What's new in version 2.0.1	5
3 What's new in version 2.0.2	5
4 What's new in version 2.0.3	5
5 Release history	6
Part II Installation	7
1 System requirements	7
2 Installation	7
Part III Site Manager	8
1 My Sites	9
2 Folders	10
3 Sites	10
4 Bookmarks	13
Part IV Upload and download	15
1 Initiating an upload	15
2 Monitoring an upload	15
3 Initiating a download	17
4 Monitoring a download	17
Part V Menu bar & Toolbar	20
1 Menu bar	20
File	20
Edit	20
View	20
Transfer	21
Help	21
2 Toolbar	23
3 Connection bar & Logging text area	23
Part VI Table view for local site	25
1 Folders navigation tree	25
2 Create new folder	25
3 Menu button View	26
4 Context menu for slides	27

5	Context menu for folders	29
6	Navigation	30

Part VII Table view for remote site 31

1	Folders navigation tree	31
2	Create new folder	31
3	Menu button View	32
4	Context menu for slides	33
5	Context menu for folders	36
6	Navigation	37

Index	0
--------------	----------

1 About PMA.Transfer

PMA.transfer is a slide transfer desktop application aimed to make slide transfer an easier process by remedying to a couple of frequent recurring problems (transfer failure, timeouts, Firewall issues, security, integrity check...)

It's available free of charge, and offers a couple of benefits including :

- Knowledge of what a slide actually is: you select a .mrxs file; the application automatically figures out to include the other files in the process.
- Runs over HTTP(S): no need to punch through firewalls.
- Error recovery in case the network connection is interrupted.
- Integrity check to verify the transferred files are not corrupt.

1.1 Who should read this

Any end user that wants to transfer slide between a local site (PMA.start) and a remote one (PMA.core or My Pathomation).

1.2 What's new in version 2.0.1

General improvements :

- Log file menu item to open directly the current log file in addition to log files' location
- Added file format to "inspect slide" interface

Bug fixes :

- VSI slides' transfer issue
- Dealing with leading/trailing spaces in host & username text fields and trailing slashes for host as well

1.3 What's new in version 2.0.2

General improvements :

- Ask for confirmation before closing the app
- Auto detect white or black text color depending on text area background color
- Add recursive folder download feature

Bug fixes :

- Fix thumbnail URL encoding issue on local site
- Tests against all supported file formats, bug fixing

1.4 What's new in version 2.0.3

New features :

- Bypass proxy
- Delete directories on server side (only if empty and not a root one)

- Rename directories on server side (only if empty and not a root one)
- Delete slides on server side
- Rename slides on server side
- Add copy full path option both locally and remotely

General improvements :

- Directly download to selected folder on local site
- Keyboard input interaction
- New icon for root directories
- Better transfer speed metrics
- Better error messages
- Enhanced integrity check
- Adding counters to all bottom bar buttons

Bug fixes :

- Refresh table view for local site following successful downloads

1.5 Release history

Version	Revision	Released
PMA.transfer 2.0.0	50	May 2019
PMA.transfer 2.0.1	55	July 2019
PMA.transfer 2.0.2	60	September 2019
PMA.transfer 2.0.3	72	January 2020

2 Installation



PMA.transfer relies on the presence of PMA.start, which can be downloaded free of charge through <http://free.pathomation.com>

2.1 System requirements

- Windows 7 or later
- Java runtime environment (JRE) 1.8 update 60 or later

2.2 Installation

- Extract file PMA.transfer.zip into a destination a folder
- Navigate to destination folder

Name	Date modified	Type	Size
 PMA.transfer-2.0.3.72.exe	1/24/2020 11:08 AM	Application	9,483 KB
 PMA.transfer.ini	3/17/2019 10:11 PM	Configuration settings	1 KB

- Double click on file PMA.transfer-2.0.3.x.exe

The Zip file is optionally shipped with a PMA.transfer.ini file containing a preconfigured connection data, it's loaded automatically when the app is launched.

3 Site Manager

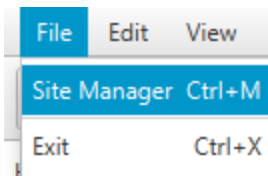
The site manager aims to make it easy for end users to store connection data related to the different Pathomation server instances (PMA.core, Pathomation cloud...).

It can be initiated via :

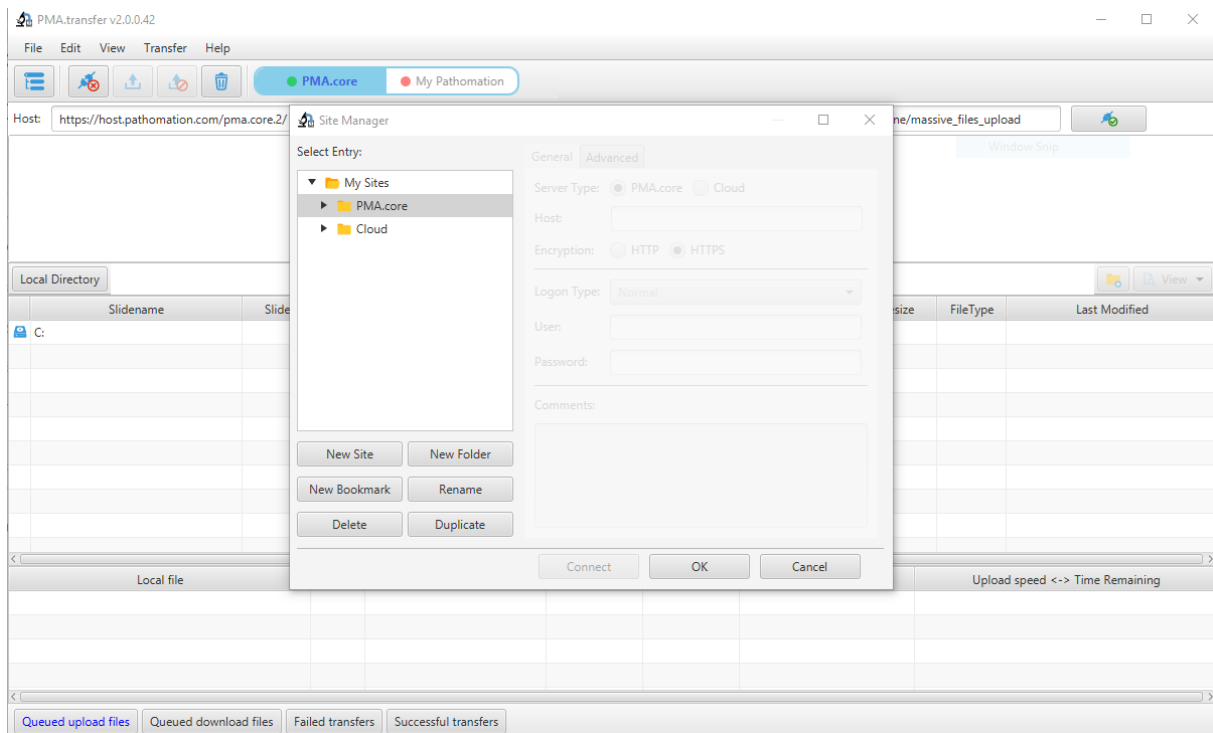
- click on button “Site Manager” (first to the left on the icons toolbar)



- click on Menu item “Site Manager” on Menu “File”.



- Keyboard shortcut “Ctrl + M”.



It enables end users to organize connection data into folders, sites, bookmarks in addition to a couple of others functionalities (rename, duplicate...)

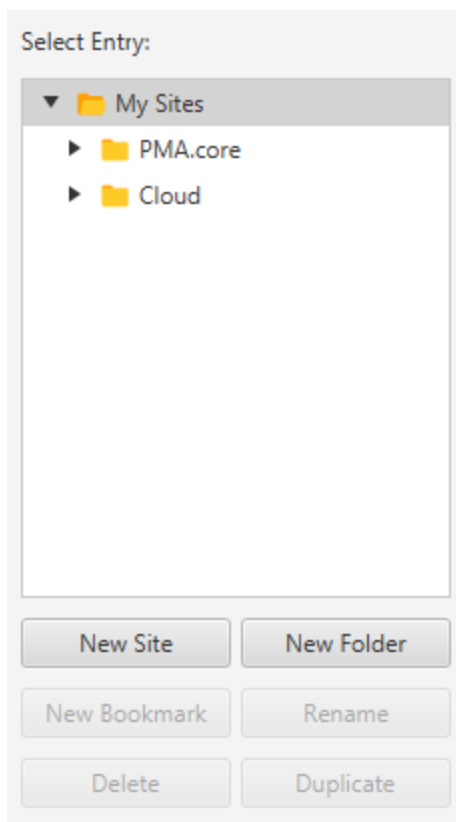
The data generated by the site manager is stored inside file “PMA.Transfer_data.json” on user’s default Windows directory :

Name	Date modified	Type	Size
★ Favorites	12/14/2018 11:42 ...	File folder	
🔗 Links	12/14/2018 11:42 ...	File folder	
🎵 Music	12/14/2018 11:42 ...	File folder	
📁 OneDrive	1/2/2019 1:40 AM	File folder	
🖼️ Pictures	12/14/2018 11:42 ...	File folder	
🎮 Saved Games	12/14/2018 11:42 ...	File folder	
🔍 Searches	12/14/2018 11:42 ...	File folder	
📞 TwixTel	3/22/2018 12:45 PM	File folder	
📺 Videos	12/14/2018 11:42 ...	File folder	
📄 PMA.Transfer_data.json	1/7/2019 1:30 AM	JSON File	1 KB

The content of this file should not be modified!

3.1 My Sites

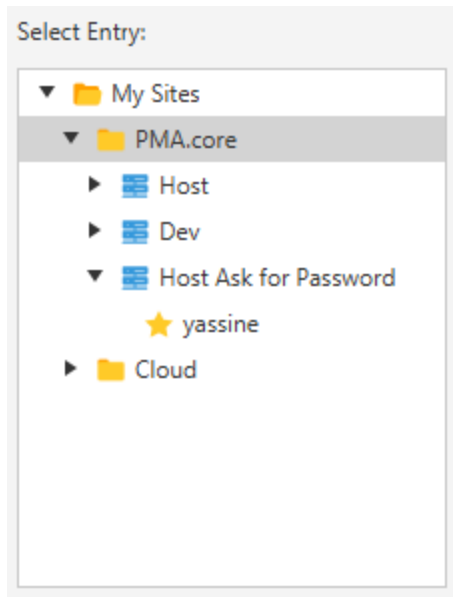
The node “My Sites” is the root of the site manager tree, it cannot be deleted or renamed.



- Click on button “New Site” creates a new site inside “My Sites”.
- Click on button “New Folder” creates a new folder inside “My Sites”.

3.2 Folders

Folders organize “sites” (and consequently “Bookmarks”) functionally to give end users better visibility :



- Click on button “New Site” creates a new site inside selected folder.
- Click on button “New Folder” creates a new folder inside selected folder.
- Click on button “Rename” makes the Tree item editable so the folder’s name can be modified (to confirm the modifications press “Enter” key, to cancel them press “ESC”).
- Click on button “Delete” deletes selected folder (and consequently everything inside is removed, which include sub-folders, sites and bookmarks!)

3.3 Sites

Sites define connection details to connect to a server instance (which can be PMA.core or cloud instance)

The screenshot shows the 'Site Manager' dialog box with the 'General' tab selected. The left pane, titled 'Select Entry:', contains a tree view with 'My Sites' expanded, showing 'PMA.core' and its sub-items: 'Host' (selected), 'Dev', 'Host Ask for Password', and 'Cloud'. Below the tree are buttons for 'New Site', 'New Folder', 'New Bookmark', 'Rename', 'Delete', and 'Duplicate'. The right pane contains configuration fields: 'Server Type' with radio buttons for 'PMA.core' (selected) and 'Cloud'; 'Host' with an empty text box; 'Encryption' with radio buttons for 'HTTP' and 'HTTPS' (selected); 'Logon Type' with a dropdown menu set to 'Normal'; 'User' and 'Password' with empty text boxes; and 'Comments' with a large empty text area. At the bottom are 'Connect', 'OK', and 'Cancel' buttons.

Site Manager

Select Entry:

- My Sites
 - PMA.core
 - Host
 - Dev
 - Host Ask for Password
 - Cloud

New Site New Folder

New Bookmark Rename

Delete Duplicate

General Advanced

Server Type: ☒ PMA.core ☐ Cloud

Host:

Encryption: ☐ HTTP ☒ HTTPS

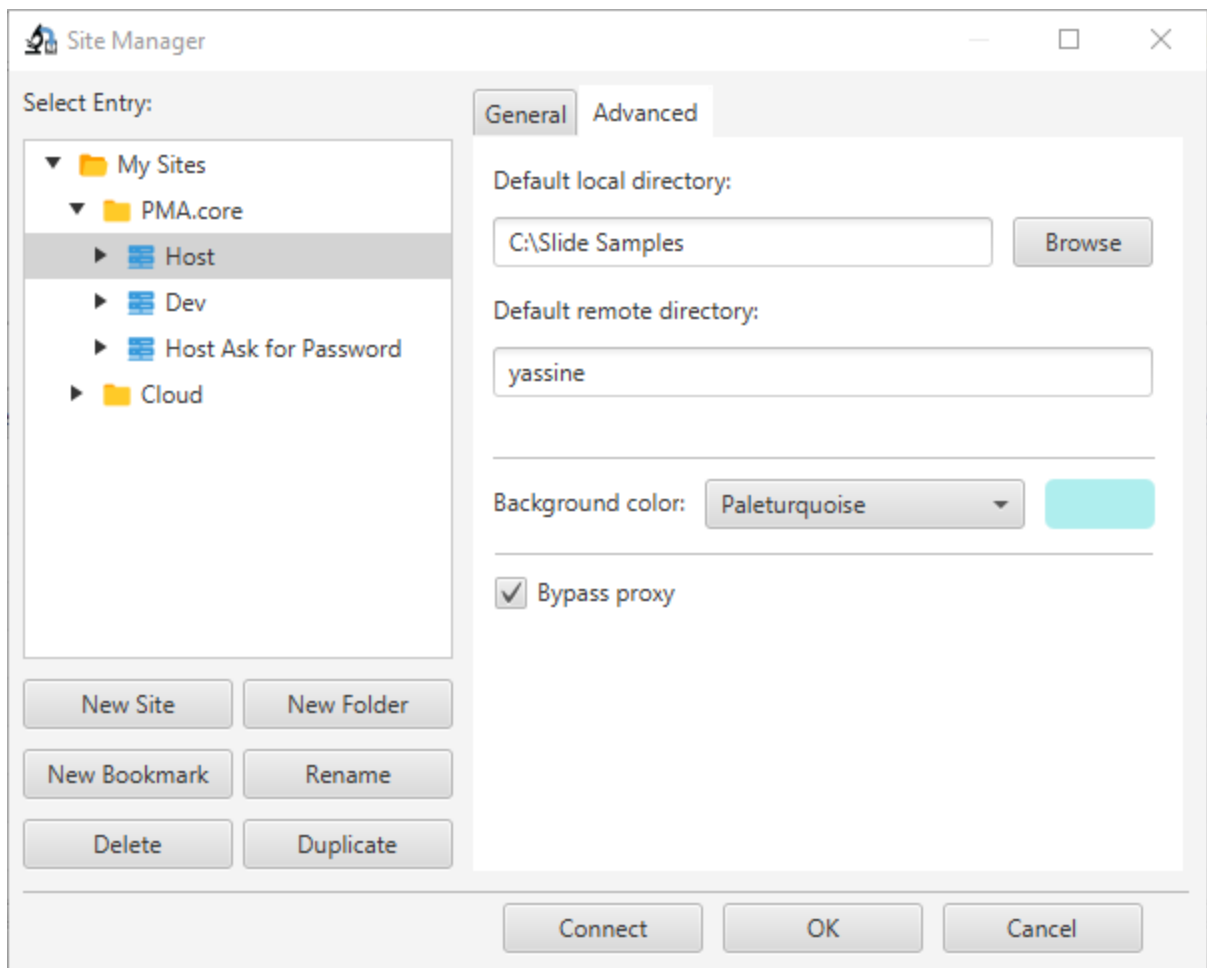
Logon Type: Normal

User:

Password:

Comments:

Connect OK Cancel



"General" & "Advanced" tabs gather the connection details for the selected site.

If "Cloud" Radio button is selected, host Text field and Encryption Radio are deactivated and switched automatically to values "host.pathomation.com", "" and "HTTPS" respectively.

For "Advanced" tab, end users can define the default local and remote directories to automatically navigate to when a successful connection is established.

It's also possible to define a background color (that will fill the logging text area) to make it visually easier for end users to identify which host are they connected to. It's worth mentioning that the text color on logging text area will be automatically white or black depending on selected background color.

The last option on the list is "bypass proxy" which makes it possible to bypass the system proxy settings to connect directly to the desired host.

- Click on button "New Site" creates a new site within the same parent folder the selected site belongs to.
- Click on button "New Folder" creates a new folder within the same parent folder the selected site belongs to.
- Click on button "New Bookmark" creates a new bookmark in a new child node inside the selected site.
- Click on button "Rename" makes the Tree item editable so the site's name can be modified (to confirm the modifications press "Enter" key, to cancel them press "ESC").
- Click on button "Delete" deletes selected site (and consequently everything inside is removed, which includes bookmarks!)

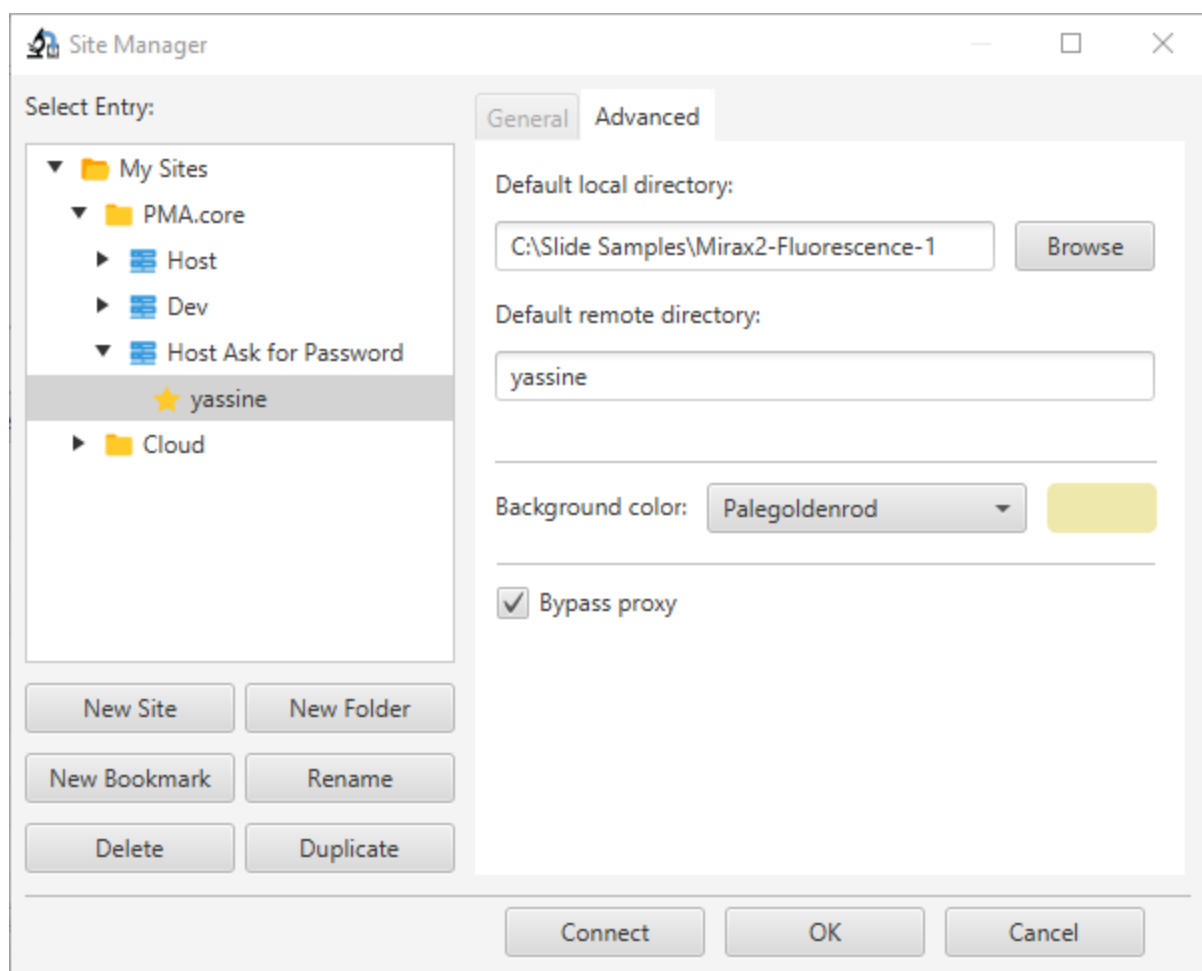
- Click on button “Duplicate” copies recursively the selected site (which includes related “bookmarks”) in a new node within the same parent folder it belongs to.

Once the end user is done with the modifications, he can either click on button “OK” to save them or button “Cancel” to discard them. It’s worth adding that if the selected node is a site or a bookmark, it’s possible to click on button “Connect” to initiate a connection and store the modifications all together.

3.4 Bookmarks

Since it’s possible to have multiple slide folders on a local HDD and access multiple slide folders on server side (either PMA.core or Pathomation cloud), bookmarks offer the possibility to save favorite combinations of local/remote directories to navigate directly to once a connection is successfully initiated.

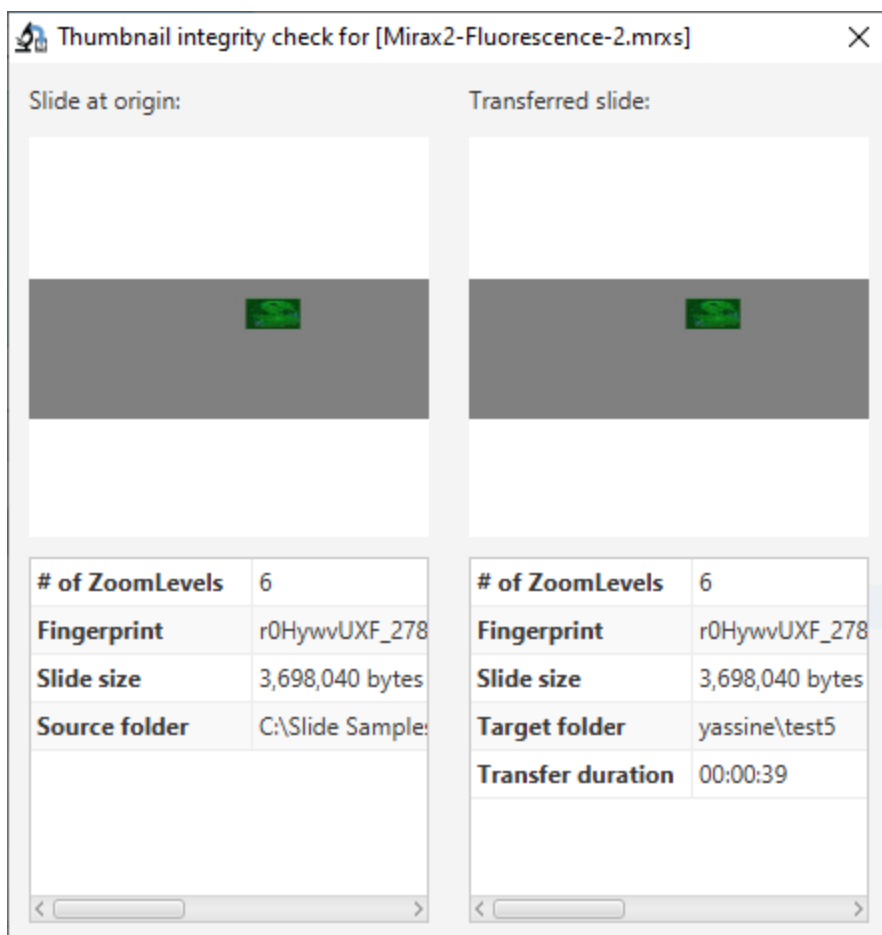
Each Bookmark belongs to a parent site and relies on it for connection data.



- Click on button “New Site” creates a new site within the parent folder of the site the selected bookmark belongs to.
- Click on button “New Folder” creates a new folder within the parent folder of the site the selected bookmark belongs to.
- Click on button “New Bookmark” creates a new bookmark next to the selected bookmark.
- Click on button “Rename” makes the Tree item editable so the bookmark’s name can be modified (to confirm the modifications press “Enter” key, to cancel them press “ESC”).

- Click on button “Delete” deletes selected bookmark.
- Click on button “Duplicate” copies the selected bookmark in a new node next to it.

Once the upload is complete, an integrity check windows pops up to compare both slides on local/remote sites.



In case the fingerprint doesn't match, a red font is used to mark this incoherence

# of ZoomLevels	6	# of ZoomLevels	6
Fingerprint	d7wn8Pyd8kPX4	Fingerprint	hOlq19NDzyQJ
Slide size	3,698,040 bytes	Slide size	3,698,040 bytes
Source folder	C:\Slide Sample	Target folder	yassine\test5
		Transfer duration	00:00:39

Failed transfers :

By design, uploads on PMA.transfer aren't supposed to "fail", it keeps relaunching failed uploads indefinitely till a complete and successful upload is achieved. Therefor the uploads shown following a click on this button are uploads that were intentionally aborted via click on button "stop".

Successful transfers :

Keeps track of successful transfers (either uploads or downloads), while giving also end users the possibility to call back the integrity check window (this can be done via mouse right click on the root of the slide or directly via a double click on that same root).

Local file	Direction	Remote file	Size	Time
▼ C:\Slide Samples\Mirax2_SizeModified\Mirax2-Flu...	-->>	yassine/uploads_forced_to_fail/Mirax2-Fluorescence...	3,698,040	Tue Jan 29 23:06:28 CET 2019
C:\Slide Samples\Mirax2_SizeModified\Mirax2-...	-->>	yassine/ Integrity check /fail/Mirax2-Fluorescence...	483,714	
C:\Slide Samples\Mirax2_SizeModified\Mirax2-...	-->>	yassine/uploads_forced_to_fail/Mirax2-Fluorescence...	483,714	
C:\Slide Samples\Mirax2_SizeModified\Mirax2-...	-->>	yassine/uploads_forced_to_fail/Mirax2-Fluorescence...	483,714	

Queued files Queued download files Failed transfers **Successful transfers (1)**

4.3 Initiating a download

There are two options to launch a download :

- Select a slide on local site (Table view to the left) then click on menu "Transfer" on the toolbar then select menu item "Download slide"
- Mouse right click inside the left table view borders, then select "Download slide to local folder" context menu item.

Download of a folder (recursively) :

The download of a folder can be performed via a click on context menu item "download folder to local site" . Once successfully initiated, The folder and its sub-directories are sub-consequently created on local side then the download of contained slides is operated to corresponding destinations.

4.4 Monitoring a download

Local file	Direction	Remote file	Size	Status	Progress	Download speed <-> Time Remaining

Queued upload files **Queued download files** Failed transfers Successful transfers

The tree table view is intended to monitor download progress and keep track of successful/aborted downloads. The toolbar to the bottom permits to switch between queued uploads/downloads, successful and aborted ones.

Queued files :

When a download is started, the slide (including the related files) are added to the view in a tree fashion. The progress bar, download speed and remaining time for each file and also the whole slide keep end user informed about the upload progress.

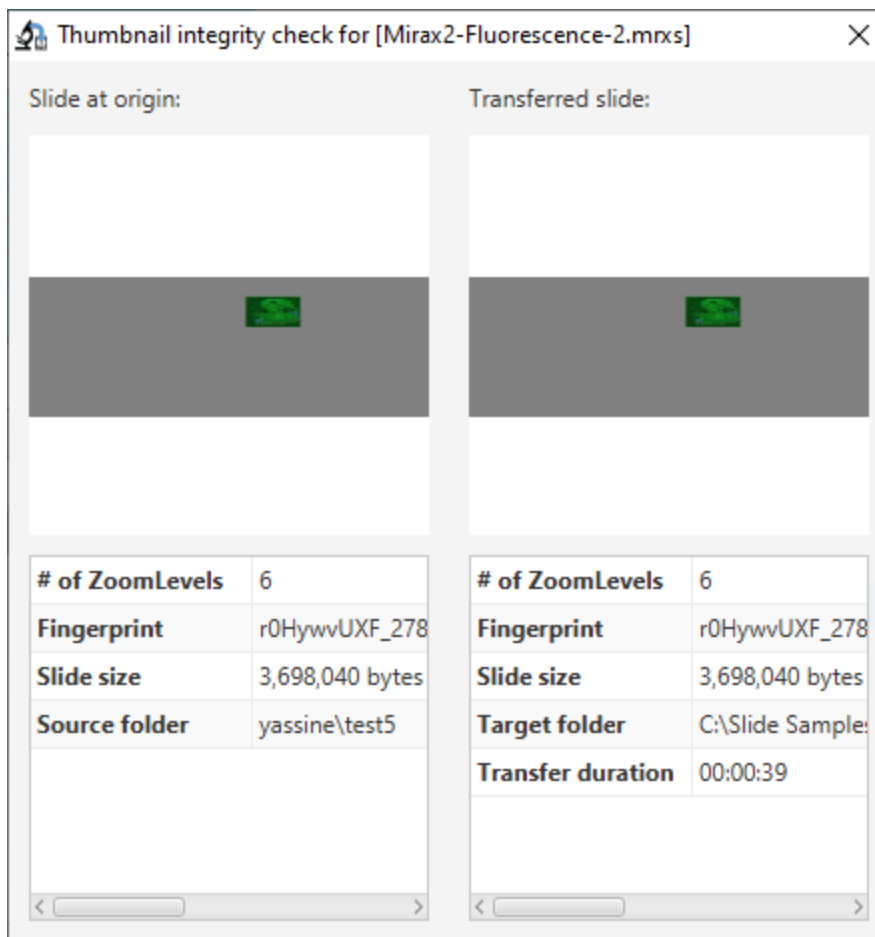
Local file	Direction	Remote file	Size	Status	Progress	Download speed <-> Time Remaining
▼ C:\Users\myidd\Desktop\Download test\Destinati...	< <--	yassine/massive_files_upload/...	3,698,040	Running...	<div><div></div></div>	1365.3 KB/s <-> 00:00:02
C:\Users\myidd\Desktop\Download test\Destinati...	< <--	yassine/massive_files_upload/...	483,714	Complete	<div><div></div></div>	
C:\Users\myidd\Desktop\Download test\Destinati...	< <--	yassine/massive_files_upload/...	483,714	Waiting...	<div><div></div></div>	
C:\Users\myidd\Desktop\Download test\Destinati...	< <--	yassine/massive_files_upload/...	483,714		<div><div></div></div>	

Queued upload files Queued download files (1) Aborted transfers Successful transfers (2)

It's worth adding :

- For multi-file slides the files are sorted by size in descendant order to give end users the best user experience
- When the internet connection is lost, the status switches to “stalling...” till the connection is established again, then it switches back to “Running...” and the download resumes

Once the download is complete, an integrity check windows pops up to compare both slides on local/remote sites.



In case the fingerprint doesn't match, a red font is used to mark this incoherence

# of ZoomLevels	6	# of ZoomLevels	6
Fingerprint	d7wn8Pyd8kPX4	Fingerprint	hOlq19NDzyQJ
Slide size	3,698,040 bytes	Slide size	3,698,040 bytes
Source folder	yassine\test5	Target folder	C:\Slide Sample:
		Transfer duration	00:00:39

Failed transfers :

By design, downloads on PMA.transfer aren't supposed to "fail", it keeps relaunching failed downloads indefinitely till a complete and successful download is achieved. Therefor the downloads shown following a click on this button are downloads that were intentionally aborted via click on button "stop".

Successful transfers :

Keeps track of successful transfers (either uploads or downloads), while giving also end users the possibility to call back the integrity check window (this can be done via mouse right click on the root of the slide or directly via a double click on that same root).

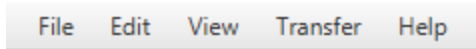
Local file	Direction	Remote file	Size	Time
▼ C:\Users\myidd\Desktop\Download test\Destinati...	< <--	yassine/massive_files_upload/Mirax2-Fluorescence-2...	3,698,040	Sun Mar 24 13:36:21 CET 2019
C:\Users\myidd\Desktop\Download test\Destin...	< <--	yassine/massive_files_u Integrity check	483,714	
C:\Users\myidd\Desktop\Download test\Destin...	< <--	yassine/massive_files_upload/Mirax2-Fluorescence-2/...	483,714	
C:\Users\myidd\Desktop\Download test\Destin...	< <--	yassine/massive_files_upload/Mirax2-Fluorescence-2/...	483,714	

Queued upload files Queued download files Failed transfers **Successful transfers (3)**

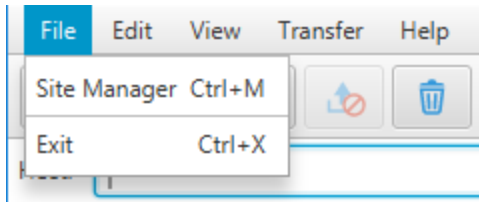
5 Menu bar & Toolbar

5.1 Menu bar

Composed of five menu items : “File”, “Edit”, “View”, “Transfer”, “Help”

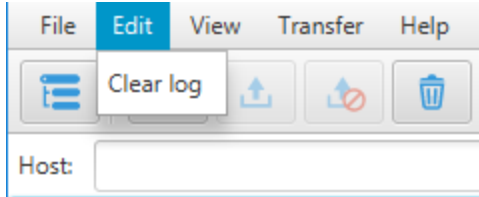


5.1.1 File



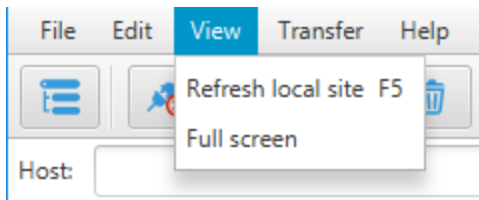
- Click on “Site Manager” launches Site manager window
- Click on “Exit”, shuts down PMA.Transfer

5.1.2 Edit



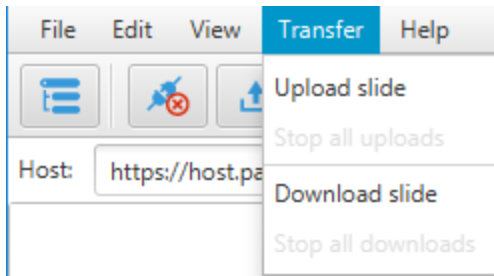
- Click on “Clear log”, clears logging messages in the text area below connection text fields

5.1.3 View



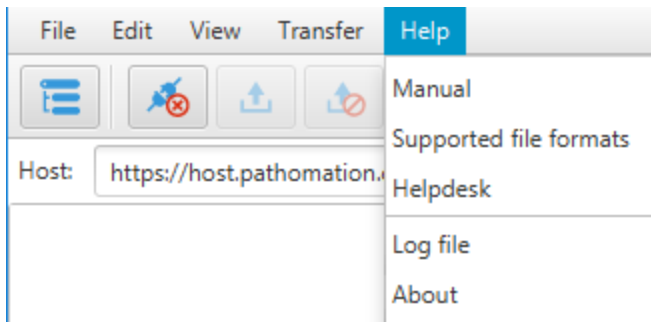
- Click on “Refresh local site”, refreshes the table view to the left related to content on end user’s local computer.
- Click on “Full screen” switches to full screen display.

5.1.4 Transfer



- Click on “upload slide” : Enabled when a slide on local HDD is selected, it initiates an upload to the remote site PMA.transfer is actually connected to (a couple of checks are operated before an upload can be started : duplicate slide name, slide already being uploaded, no connection...)
- Click on “Stop all uploads” : Enabled when there are active uploads running, it aborts all current running uploads.
- Click on "Download slide" : Enabled when a slide on remote site is selected, it initiates a download to the selected destination on local site (a couple of checks are operated before a download can be started : creation of destination folders, duplicate slide name, slide already being downloaded, no connection...)
- Click on “Stop all downloads” : Enabled when there are active downloads running, it aborts all current running downloads.


5.1.5 Help



- Click on “Manual” downloads latest version of PMA.transfer manual.
- Click on "Supported file formats" loads a table view of the supported file formats by PMA.transfer.

vendor	extension	compression	brighfield	fluo	zstack
TIFF	.tif, .tiff	JPEG, JPEG2000, LZW, Deflate, Raw, RLE	✓		
JPEG	.jpeg, .jpg	JPEG	✓		
JPEG 2000	.jp2	JPEG2000	✓		
PNG	.png	PNG	✓		
Olympus VSI	.vsi	lossless JPEG, JPEG, Raw	✓	✓	
Olympus WebView	.xml	JPEG	✓		
Ventana / Roche BIF	.bif	JPEG	✓		✓
Hamamatsu VMS	.vms	JPEG	✓		
Hamamatsu NDPI	.ndpi	JPEG	✓	✓	✓
Hamamatsu NDPIS (Image Set)	.ndpis	JPEG	✓	✓	✓
Hamamatsu DICOM	.dcm	JPEG, JPEG2000	✓		
Huron Technologies	.tif	JPEG	✓		
3DHistech MRXS	.mrxs	JPEG, PNG, BMP	✓	✓	✓
Aperio / Leica SVS	.svs	JPEG, JPEG2000	✓	✓	✓
Aperio / Leica AFI (Image Set)	.afi	JPEG, JPEG2000	✓	✓	✓
Aperio / Leica CWS	.cws	JPEG	✓		

- Click on "Helpdesk" redirects to a web interface to create a support ticket.


Guest User | [Sign In](#)

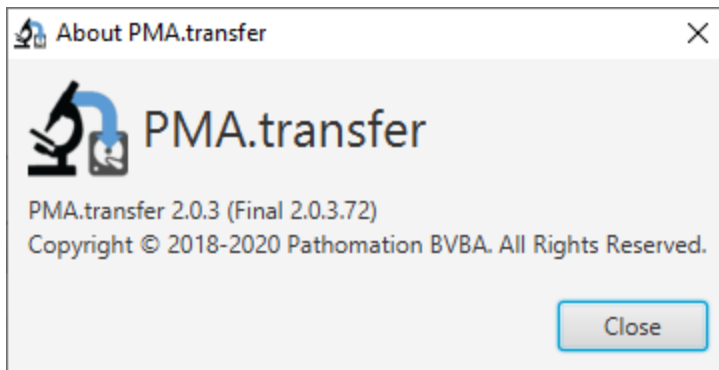
[Support Center Home](#)
[Open a New Ticket](#)
[Check Ticket Status](#)

Welcome to the Support Center

In order to streamline support requests and better serve you, we utilize a support ticket system. Every support request is assigned a unique ticket number which you can use to track the progress and responses online. For your reference we provide complete archives and history of all your support requests. A valid email address is required to submit a ticket.

[Open a New Ticket](#)
[Check Ticket Status](#)

- Click on "Log file" opens up the current log file in notepad in addition to log files's location
- Click on "About" pops up an interface regarding general information about PMA.transfer



5.2 Toolbar

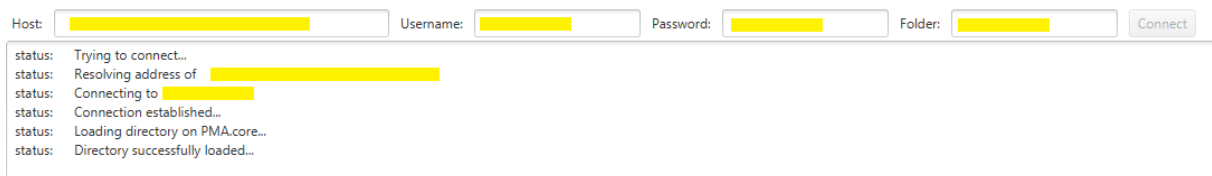


From left to right :

- Site Manager : launches site manager window
- Disconnect : disconnect from current session, if no connection is already established an alert dialog pops up for notification.
- Start upload : Enabled when a slide on local HDD is selected, it initiates an upload to the remote site PMA.transfer is actually connected to (a couple of checks are operated before an upload can be started : duplicate slide name, slide already being uploaded, no connection...)
- Stop upload : Enabled when there are active uploads running, it aborts all current running uploads.
- Clear log : Clears logging messages in the text area below connection text fields
- Switch Mode : To switch between a PMA.core server and Pathomation cloud (it operates the necessary disconnections if required)

5.3 Connection bar & Logging text area

For PMA.core :



- Host : PMA.core instance to connect to, it should be in this form "http(s)://xxxxx/pma.core.2/"
- Username & Password : connection credentials
- Folder : Remote directory on server to navigate to if connection is successful

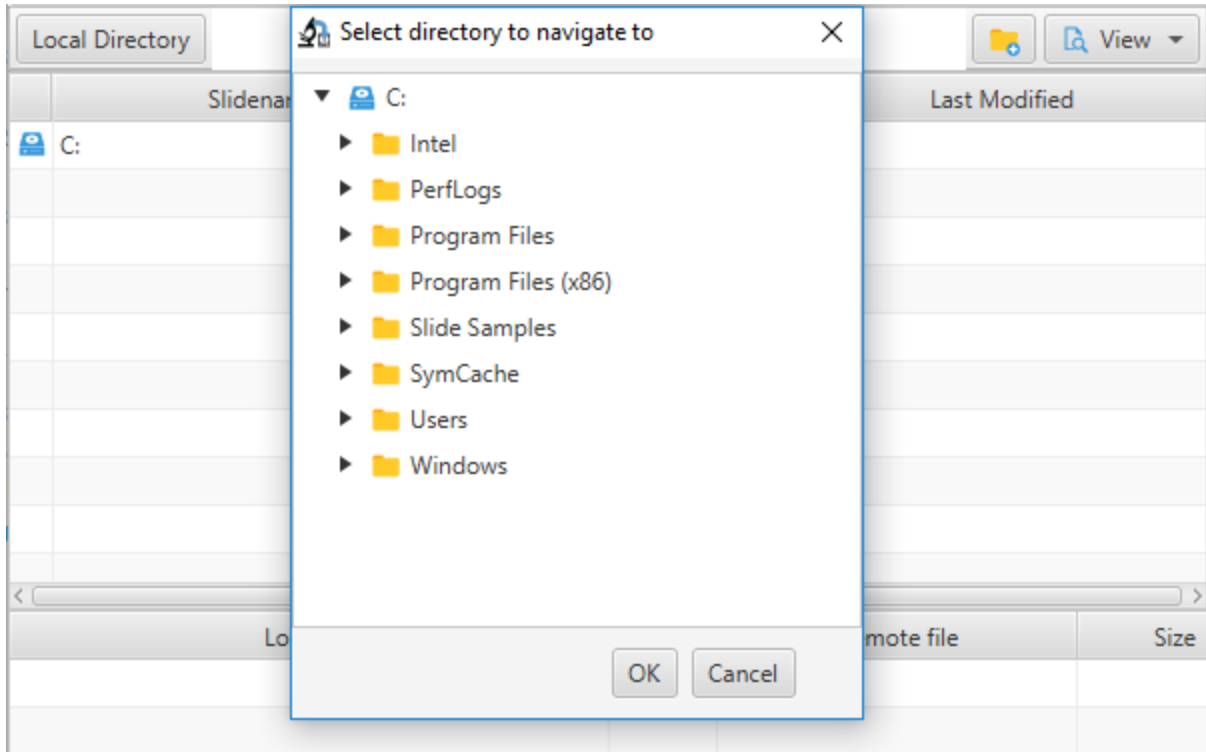
For My Pathomation :

Email:	<input type="text"/>	Password:	<input type="password"/>	Folder:	<input type="text"/>	<input type="button" value="Connect"/>
status: Trying to connect to the cloud...						
status: Resolving address of <input type="text"/>						
status: Connecting to <input type="text"/>						
status: Connection established...						
status: Loading user's directory on the cloud...						
status: Directory successfully loaded...						

- Email : The email address used to subscribe to Pathomation cloud.
- Password : Password received on inbox once the subscription & payment are validated.
- Folder : disabled text field, end user can only connect to its own subscription folder.

6 Table view for local site

6.1 Folders navigation tree

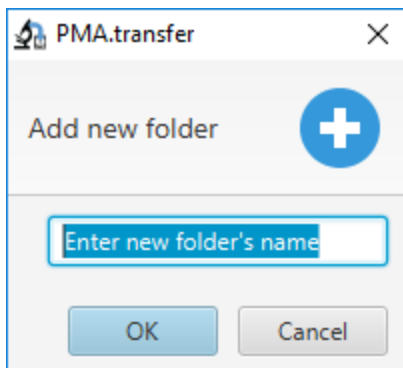


Click on button “Local Directory” opens a tree view window to select folder to navigate to. Action takes places by a click on button “OK”, while “cancel” simply cancels operation.

6.2 Create new folder

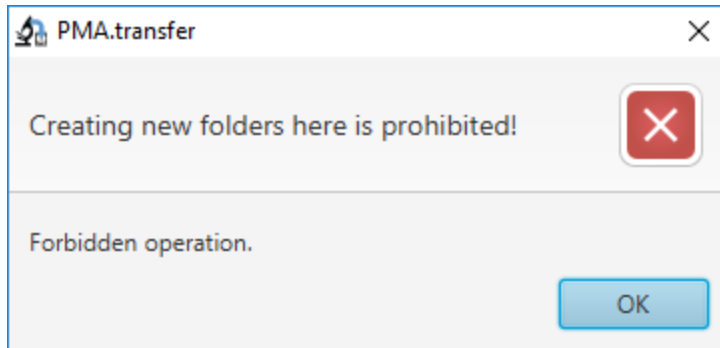


Click on this button pops up the following dialog window :

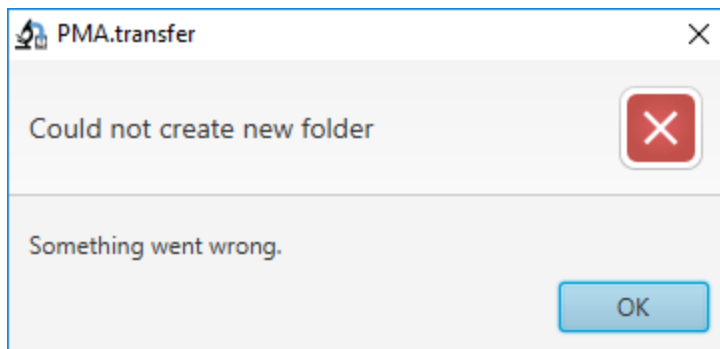


Name of the folder to be created should be added on the text field then a click on button “OK” for confirmation. If operation is successful, the folder is added and the table view is automatically refreshed to show the newly created folder, otherwise one of the following windows pops up :

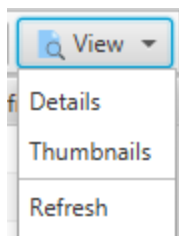
- If the operation is prohibited :



- If operation fails (duplicate folder name, access rights..) :



6.3 Menu button View



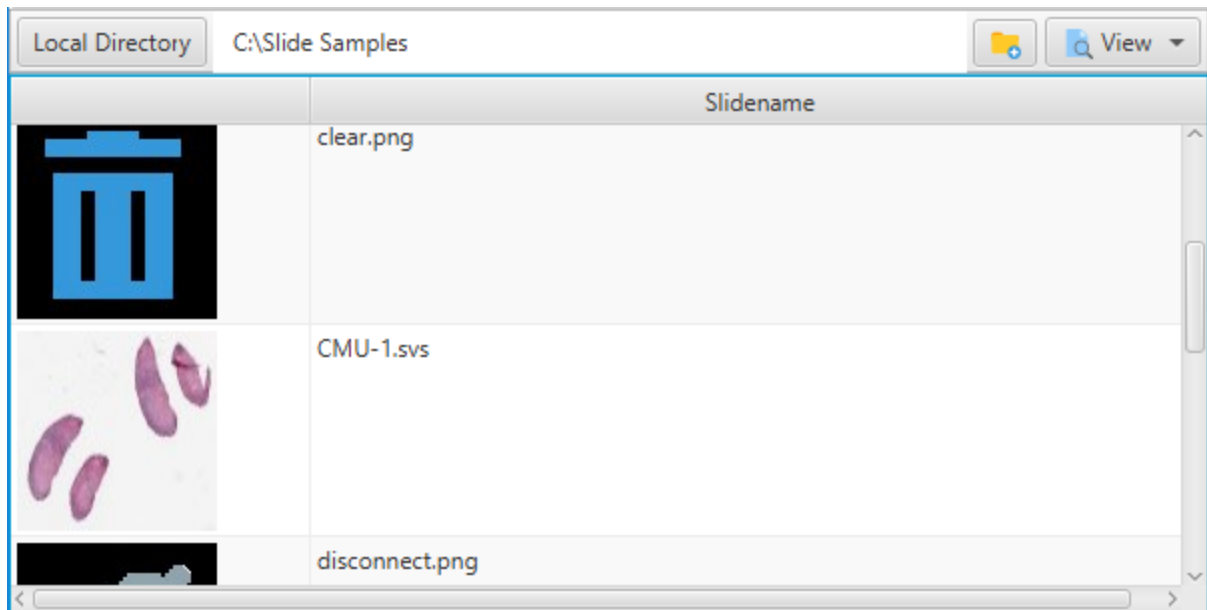
Composed of three menu items : Details, Thumbnails, Refresh

Details :

This is the default view mode for the table view, it includes an icon, “Slidename”, “Slidesize”, “FileType”, “Last Modified” columns

Thumbnails :

This view mode should be selected when it's needed to view the thumbnails of a slide (or a couple of slide). It includes an icon and a "Slidename" columns.



Refresh :

Refreshes the table view (it's worth noting that the table view, buttons "Add folder" and "View" get deactivated till the refresh is complete)

6.4 Context menu for slides

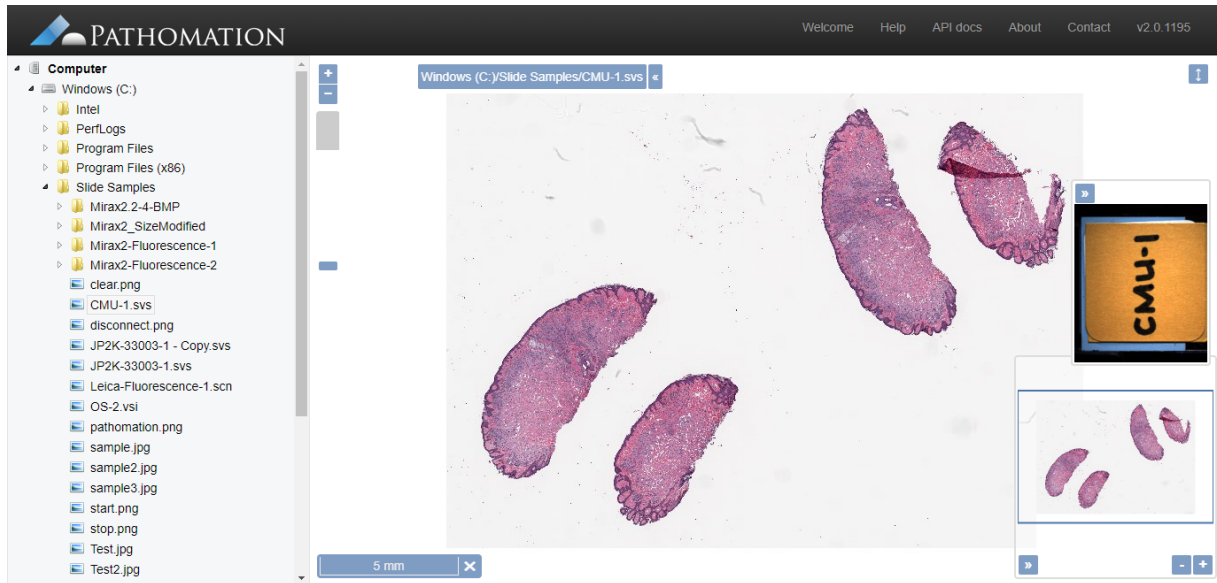
	Slidename	Slidesize	FileType	Last Modified
	..			
	3D_FL_test01.mrxs	43,620,186	MRXS File	Thu Dec 26 06:34:59 GMT+01:00 2019
	clear.png	274	PNG File	Sun Dec 08 19:02:43 GMT+01:00 2019
	JP2K-33003-1.svs			05:40:22 GMT+01:00 2018
	JP2K-YCBCR-1.svs			06:36:50 GMT+01:00 2019
	sampleX.jpg			14:37:58 GMT+01:00 2019
	Test2.jpg			19:02:37 GMT+01:00 2019

Open slide in PMA.start
 Upload slide to remote site
 Inspect slide Ctrl+Alt+I
 Copy full path Ctrl+Alt+C

Initiated via mouse right click within the table view borders, it's composed of four menu items : "Open slide in PMA.start", "Upload slide to remote site", "Inspect slide" and "Copy full path".

Open slide in PMA.start :

Opens the slide in PMA.start

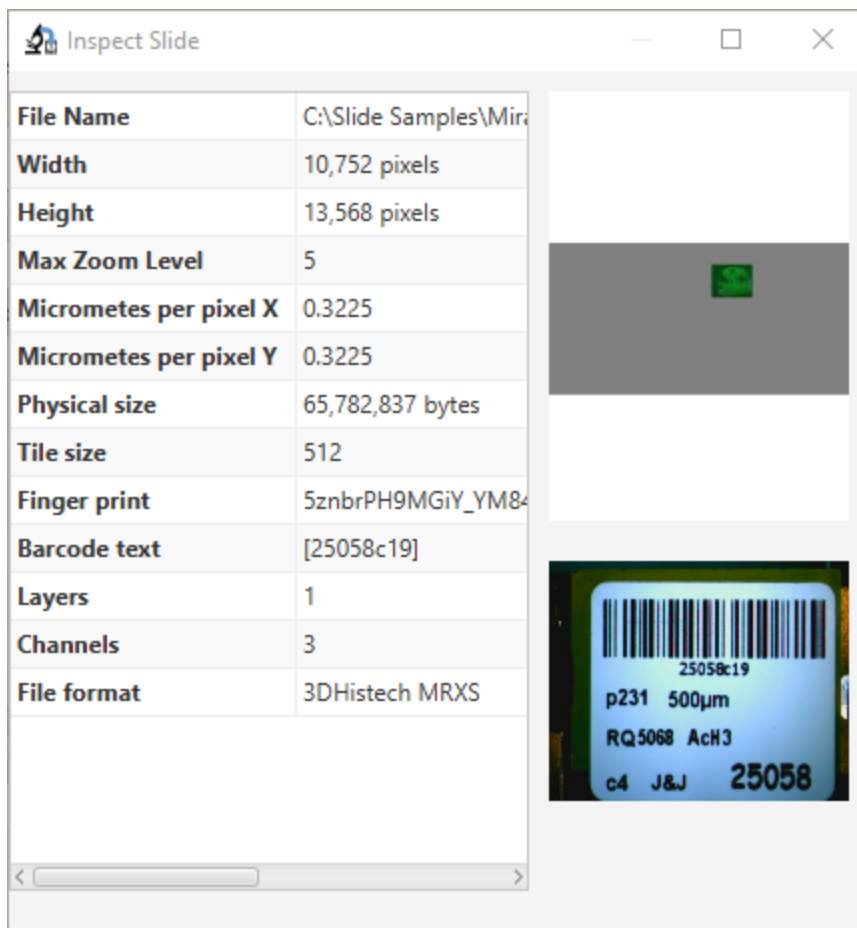


Upload slide to remote site :

Has been discussed in details earlier on this tutorial.

Inspect slide :

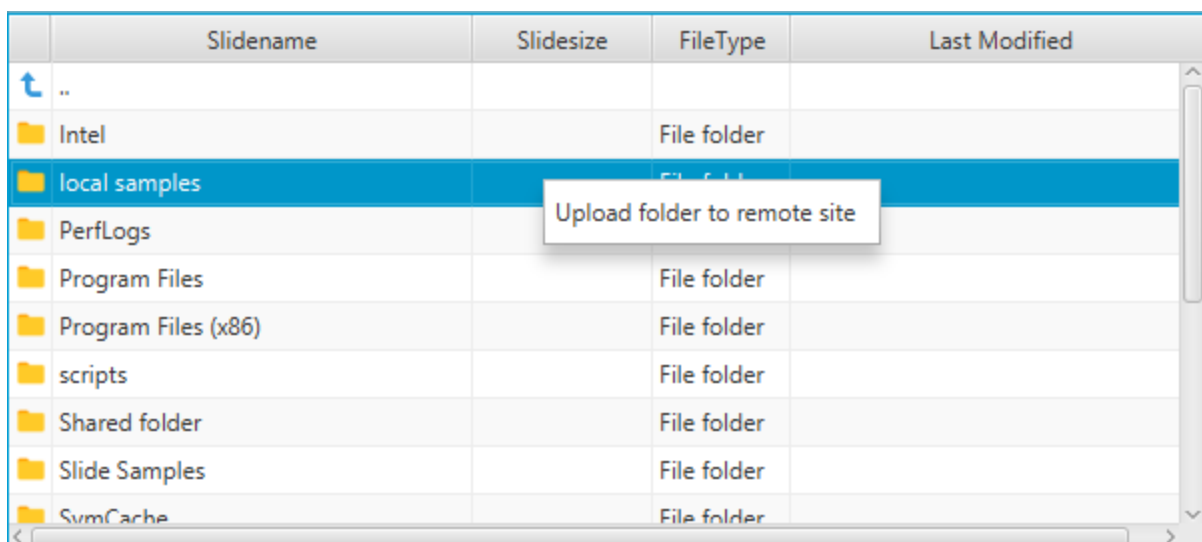
Information data regarding the slide (Thumbnail, fingerprint, size...)



Copy full path :

Copies the full path of the local slide to the clipboard.

6.5 Context menu for folders




Initiated via mouse right click within the table view borders, it's composed of one menu item : "Upload folder to remote site".

Upload folder to remote site :

Has been be discussed in details earlier on this tutorial.

6.6 Navigation

- Double click to navigate into a folder

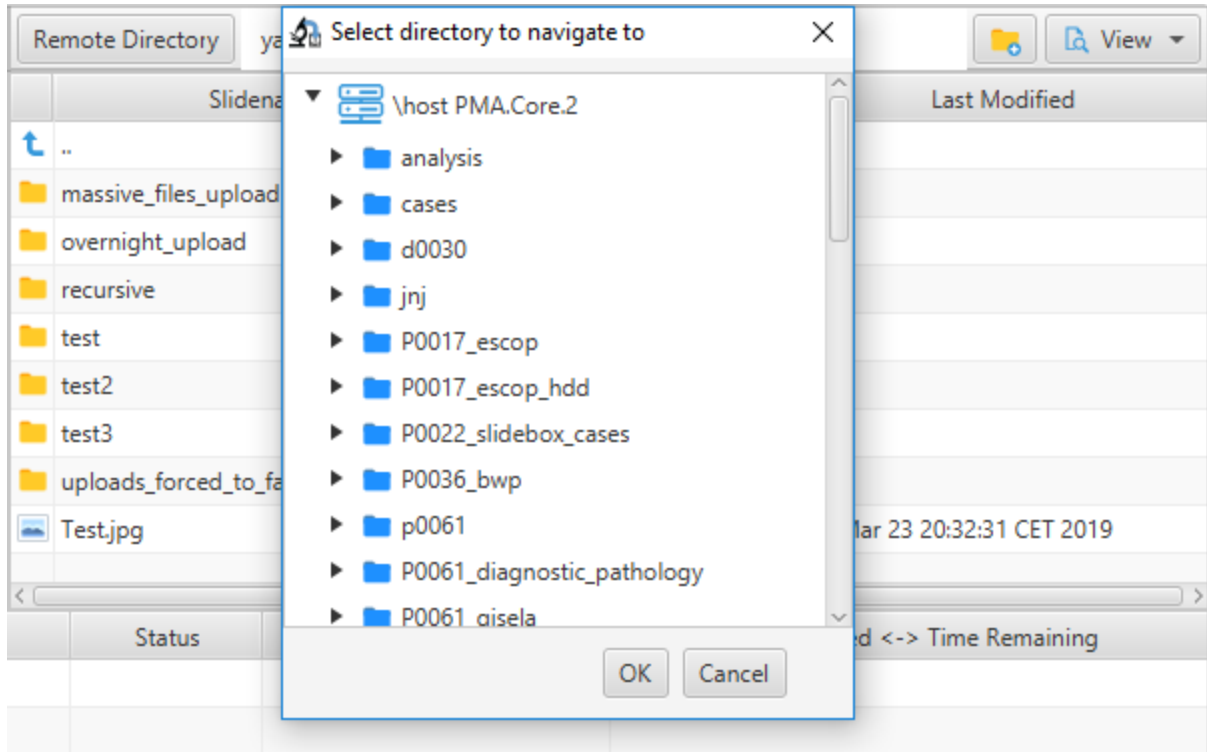
- Double click on this row  (to the top) to navigate to a parent folder

- | | Slidename ▲ | Slidesize | FileType | Last Modified |
|--|-------------|-----------|----------|---------------|
|--|-------------|-----------|----------|---------------|

Click on column headers to sort content in the table view by slides' name, slides' size, file type (folder or slide) and last modification date in ascendant or descendant order.

7 Table view for remote site

7.1 Folders navigation tree

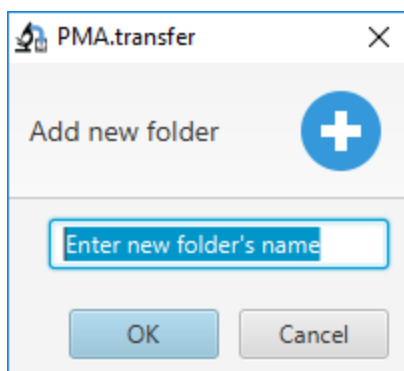


Click on button "Remote Directory" opens a tree view window to select folder to navigate to. Action takes place by a click on button "OK", while "cancel" simply cancels operation. It's worth also noting that the folder blue icon refers to a root directory, while the yellow icon refers to a non root one.

7.2 Create new folder

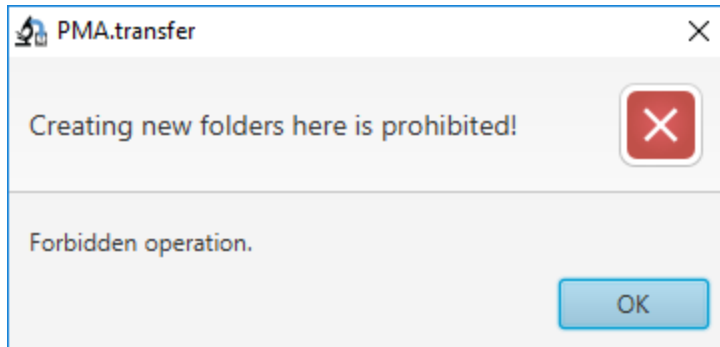


Click on this button pops up the following dialog window :

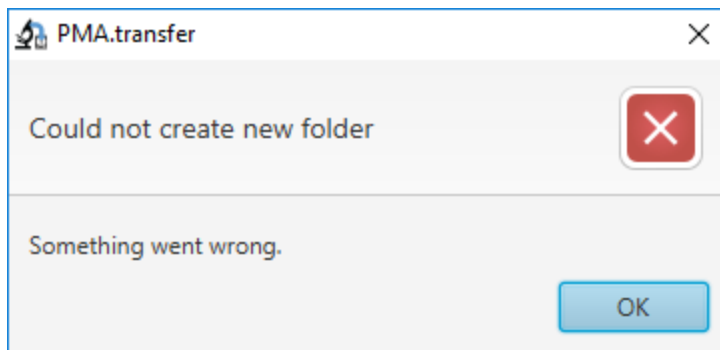


Name of the folder to be created should be added on the text field then a click on button “OK” for confirmation. If operation is successful, the folder is added and the table view is automatically refreshed to show the newly created folder, otherwise one of the following windows pops up :

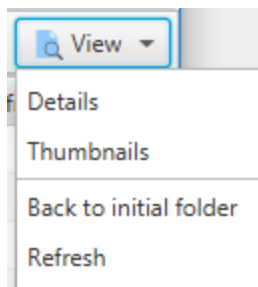
- If the operation is prohibited :



- If operation fails (duplicate folder name, access rights..) :



7.3 Menu button View



Composed of four menu items : Details, Thumbnails, Back to initial folder and Refresh.

Details :

This is the default view mode for the table view, it includes an icon, “Slidename”, “Slidesize”, “FileType”, “Last Modified” columns

Thumbnails :

This view mode should be selected when it's needed to view the thumbnails of a slide (or a couple of slide). It includes an icon and a "Slidename" columns.




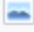



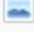


Back to initial folder :

This can be very useful to get back to initial folder of connection following series of navigation to parent/children folders.

Refresh :

Refreshes the table view (it's worth noting that the table view, buttons "Add folder" and "View" get deactivated till the refresh is complete)

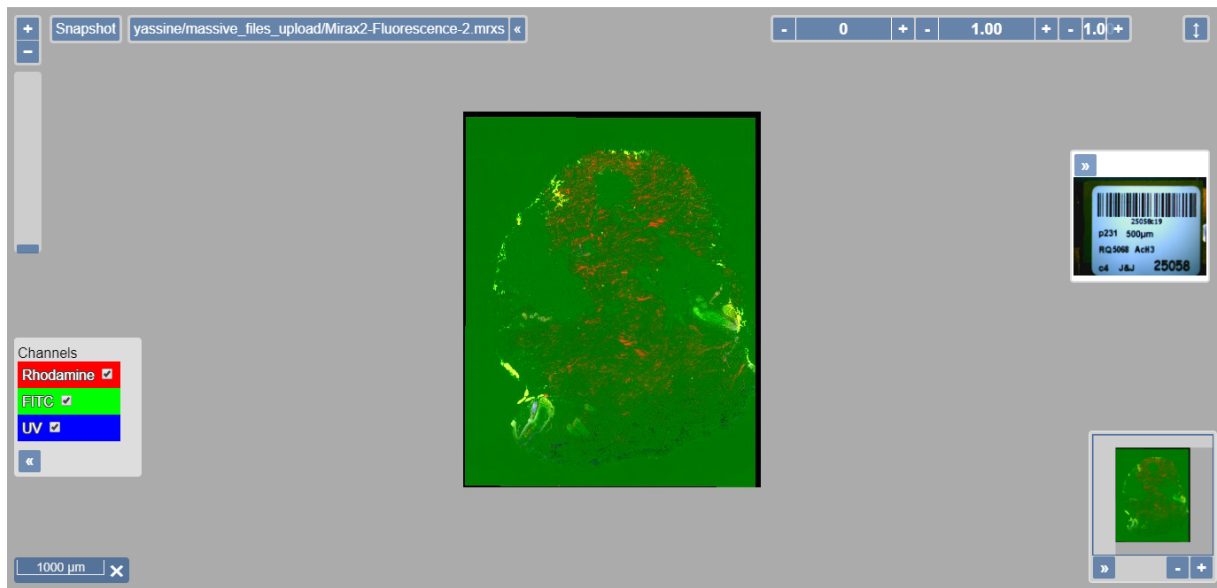
7.4 Context menu for slides

	Slidename	Slidesize	FileType	Last Modified
	CMU-1.ndpi	198,030,965	NDPI File	Fri Aug 09 23:38:14 GMT+01:00 201
	CMU-1-40x - 2010-01-12 13			Aug 29 17:13:34 GMT+01:00 20
	HandEcompressed_Scan1.q			Aug 12 00:09:10 GMT+01:00 2.
	HDP_Slides_3_S02.tif			g 09 23:56:19 GMT+01:00 201
	HGX_JP2K_04050736B0045S			Aug 10 19:31:41 GMT+01:00 201
	JP2K-YCBCR-1.svs			Jul 17 03:51:41 GMT+01:00 201
	Leica-1.scn			Aug 10 00:48:43 GMT+01:00 201
	OS-2.bif			Jul 17 07:33:20 GMT+01:00 201
	png01_julia_4K.png	16,646,559	PNG File	Wed Jul 17 17:20:19 GMT+01:00 201
	raw_rab.nd2	4,013,576,192	ND2 File	Mon Aug 12 10:02:17 GMT+01:00 2.

Initiated via mouse right click within the table view borders, it's composed of six menu items : "Open slide in PMA.core", "Download slide to local folder", "Rename slide", "Delete slide", "Inspect slide", "Copy full path".

Open slide in PMA.core :

Opens selected slide in PMA.core viewer

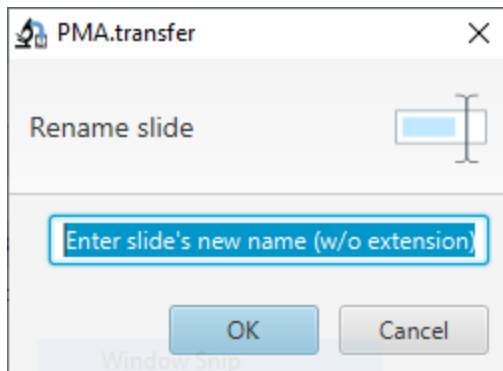


Download slide to local folder :

Has been discussed in details earlier on this tutorial.

Rename slide :

Click on this option pops up the following window :



The slide name to be introduced should not include the extension and the new name shouldn't be already used on a slide on the same folder.

Delete slide :



A confirmation window asks for delete confirmation, once confirmed the slide is removed completely from the server (warning : this action cannot be undone).

Inspect slide :

Information data regarding the slide (Thumbnail, barcode, fingerprint, size...)

Inspect Slide

File Name	yassine/massive_files
Width	10,752 pixels
Height	13,568 pixels
Max Zoom Level	5
Micrometes per pixel X	0.3225
Micrometes per pixel Y	0.3225
Physical size	3,698,040 bytes
Tile size	512
Finger print	yE6svAKQ5NxSmeVF
Barcode text	25058c19
Layers	1
Channels	3
File format	MRXS



Copy full path :

Copies the full path of the remote slide to the clipboard.

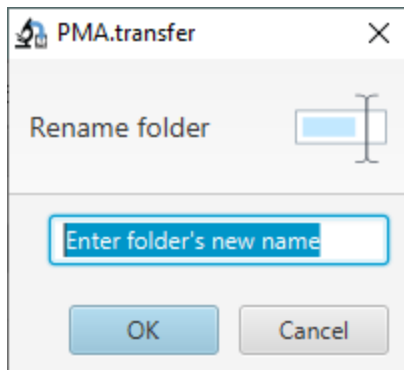
7.5 Context menu for folders

	Slidename	Slidesize	FileType	Last Modified
↑	..			
📁	brightfield		File folder	
📁	testtempwim2		File folder	
📁	WG26		File folder	
🖼️	CMU-1.mrxs	565,102,675	MRXS File	Sun Dec 15 11:46:31 GMT+01:00 2019
🖼️	CMU-1.svs	177,552,579	SVS File	Sun Dec 15 11:47:06 GMT+01:00 2019

Initiated via mouse right click within the table view borders, it's composed of three menu items : "Rename folder", "Delete folder", "Download folder".

Rename folder :

Click on this option pops up the following window :



It's only permitted to rename empty folders and the new name shouldn't be already used on a neighboring folder.


Delete folder :

It's only permitted to rename an empty folder. If it's the case, a confirmation window asks for delete confirmation, once confirmed the folder is removed completely from the server (warning : this action cannot be undone).

Download folder :

Has been discussed in details earlier on this tutorial.

7.6 Navigation

- Double click to navigate into a folder
- Double click on this row  (to the top) to navigate to a parent folder

	Slidename ▲	Slidesize	FileType	Last Modified
--	-------------	-----------	----------	---------------

Click on column headers to sort content in the table view by slides' name, slides' size, file type (folder or slide) and last modification date in ascendant or descendant order.